



Multi-Bag Filter Vessel MF series

MULTI-BAG VESSEL

MULTI-BAG FILTRATION UNIT

Contents

Multi-Bag Filter Vessel
Technical Detail
Specification
How to order

Page 1

Page 2

Page 3

Page 4

SBR201912341

MULTI-BAG VESSEL

MULTI-BAG FILTRATION UNIT



Multi-Bag Filter Vessel MF series

MULTI BAG FILTER VESSEL

Our user friendly design multi bag filter with construction from 3 bags to 24 bags to meet larger liquid flow rate requirement up to 1,000 m³/hr

All bag filter designs are in ASME VIII see VIII DIV I standard.

Features

- Unique mechanical spring rotating cover
- Bag filter with easy operation and high economy
- Each filter bag has a separate locking device to ensure the filter and filter
- Good sealing between bags
- 3 points balance lock the filter bag to ensure no side leakage
- Designed according to ASME standards
- Available in 3 to 24 bags
- Suitable for occasions with large flow and solid content

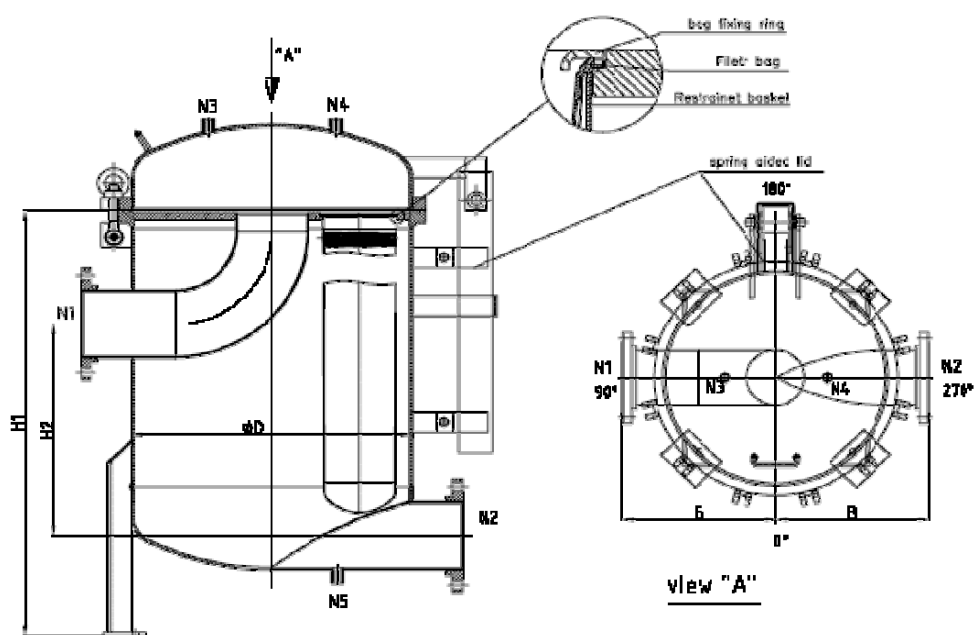
Cover Closure Options

- DL type
Davit Lid Cover Closure
- SA type
Unique Spring Lifting cover closure
- SB type
Spring Balancer Cover Closure
- SV type
Quick Opening Cover

MF Vessel Engineering Specification¹

Vessel Type	Size	No. of Filter Bag	Theoretical Flow Rate	Max. Operating Pressure	Max. Operating Temperature	Filter Area	Inlet/Outlet
MF2A2-10-030A-SB	#02	2	80 m ³ /hour	10.0bar	120°C	1.0 m ²	3" - 4"
MF3A2-10-030A-SB	#02	3	120 m ³ /hour	10.0bar	120°C	1.5 m ²	3" - 4"
MF4A2-10-040A-SB	#02	4	160 m ³ /hour	10.0bar	120°C	2.0 m ²	3" - 6"
MF5A2-10-040A-SB	#02	5	200 m ³ /hour	10.0bar	120°C	2.5 m ²	4" - 6"
MF6A2-10-060A-SB	#02	6	240 m ³ /hour	10.0bar	120°C	3.0 m ²	4" - 6"
MF8A2-10-060A-SB	#02	8	320 m ³ /hour	10.0bar	120°C	4.0 m ²	6" - 8"
MF10A2-10-080A-SB	#02	10	400 m ³ /hour	10.0bar	120°C	5.0 m ²	8" - 10"
MF12A2-10-080A-SB	#02	12	480 m ³ /hour	10.0bar	120°C	6.0 m ²	8" - 10"
MF14A2-10-080A-SB	#02	14	560 m ³ /hour	10.0bar	120°C	7.0 m ²	8" - 10"
MF16A2-10-100A-SB	#02	16	640 m ³ /hour	10.0bar	120°C	8.0 m ²	8" - 12"
MF18A2-10-120A-SB	#02	18	720 m ³ /hour	10.0bar	120°C	9.0 m ²	10" - 14"
MF20A2-10-140A-SB	#02	20	800 m ³ /hour	10.0bar	120°C	10.0 m ²	10" - 16"
MF22A2-10-160A-SB	#02	22	880 m ³ /hour	10.0bar	120°C	11.0 m ²	12" - 18"
MF24A2-10-180A-SB	#02	24	960 m ³ /hour	10.0bar	120°C	12.0 m ²	14" - 18"

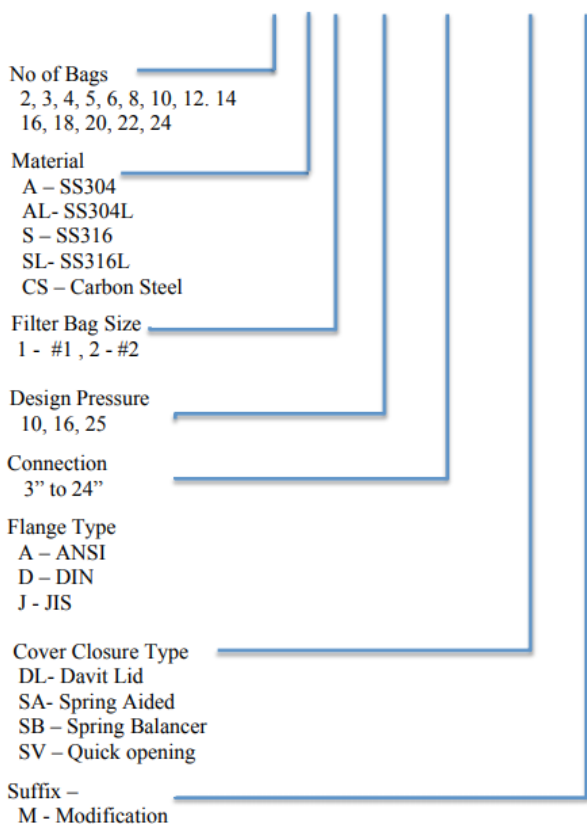
MF Vessel Engineering Drawing Sample²



(1&2) For more detailed descriptions and information suited for your requirements, contact us at sales-inquiry@universal-filtration.com. Uses may vary depending on needs and requirements of end client.

Ordering Specification code³

Filter Vessel Code MF 3 A 2 - 10 - 040- A – SA- M



(3) Contact us at sales-inquiry@universal-filtration.com if you are unsure of specification codes. We will assist and recommend a desired solution based on your requirements.

How To Order From US

Send us an inquiry, we will respond with a quote

Whether its for filter housing, filter bags, cartridges, or customisable solutions, we'll respond with a quotation for your needs. We ensure the highest quality finishes and consistency in our products. Email us your requirements and we'll get in touch.

Purchase order & agreement, and production

Once a purchase order is made and our payments terms are agreed to, we'll begin production of your order. Depending on the order, our lead time would vary between one week to four weeks. We'll keep you updated on the progress and status.

Completion, delivery, and sea freight

Once completed, we'll arrange a sea freight shipment to your specified location. We deliver internationally. Delivery by courier is also available. Clients can choose to arrange for self collection direct from our factories through a forwarder, if they would like to handle their own shipment.

For Inquiry contact us at Sales-Inquiry@universal-filtration.com

SBR201912341



For Inquiry contact us at Sales-Inquiry@universal-filtration.com

Asia Pacific Regional Office
Universal Filtration Solutions Asia Pte Ltd
81 Ubi Ave 4, UB-ONE #06-28
Singapore 408830

SBR201912341

MULTI-BAG VESSEL

MULTI-BAG FILTRATION UNIT